

INTRODUCTION OF RETAINER RING

-GMT, 2009

INDEX

- RETAINER RING LIST
- Retainer Ring生产工艺
- RETAINING DATA
- MIRRA RETAINER RING DATA
- Jig
- 其他Jig及加工Parts
- BONDING 步骤

RETAINER RING LIST

Main 장비

AMAT

AMAT

EBARA

W/F Size

200mm

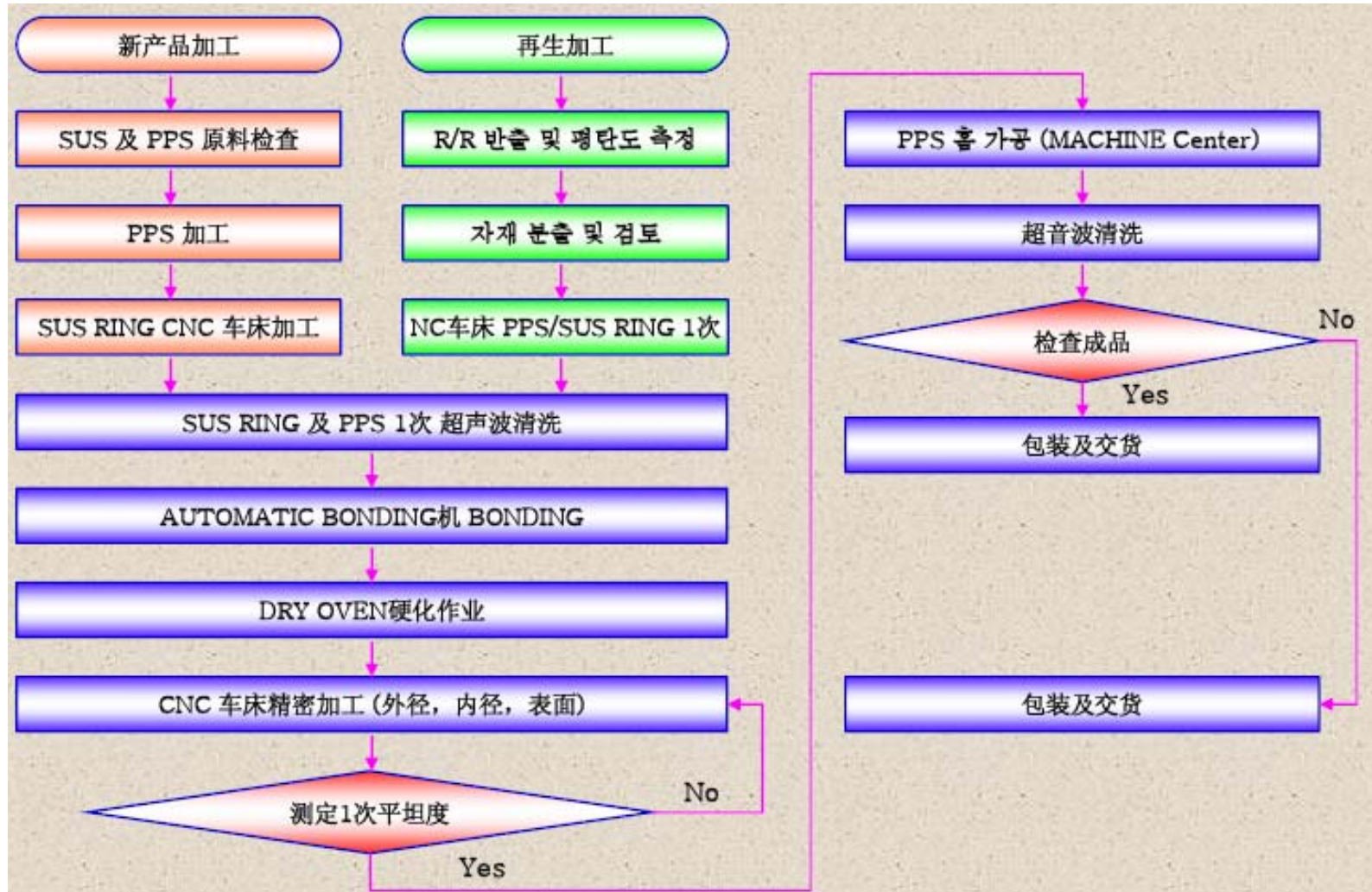
300mm

300mm

Design



Retainer Ring生产工艺



RETAINING DATA

MIRRA Retainer Ring 测试数据

2009-01-21

Type	Marking No	外径 / 震源度 (mm)			内径 / 震源度 (mm)		糙度 (μm)	平行度 (\square)	备注
SPEC	AMAT & OEM	$\Phi 247.85 + 0.15$ $- 0.05$	无	无	$\Phi 200.76 + 0.00$ $- 0.10$	无	Ra 0.3 ↓	FM 0.03 ↓	
	PTC	$\Phi 247.85 + 0.15$ $- 0.05$	震源度 (O)	同心度 (◎)	$\Phi 200.75 + 0.05$ $- 0.05$	震源度 (O)	Ra 0.2 ↓	FM 0.015 ↓	
MIRRA CMP 8Inch用	PTC-01-21-0001	247.8768	0.0268	0.0051	200.7332	-0.0168	0.16	0.0110	
	PTC-01-21-0004	247.8810	0.0310	0.0046	200.7780	0.0280	0.17	0.0172	
	PTC-01-21-0005	247.8959	0.0459	0.0050	200.7529	0.0029	0.18	0.0155	
	PTC-01-21-0006	247.9058	0.0558	0.0059	200.7524	0.0024	0.17	0.0122	
	PTC-01-21-0007	247.9132	0.0632	0.0090	200.7571	0.0071	0.18	0.0134	
	PTC-01-21-0009	247.8537	0.0037	0.0064	200.7633	0.0133	0.16	0.0096	
	PTC-01-21-0010	247.8692	0.0192	0.0073	200.732	0.0185	0.17	0.0131	
	PTC-01-21-0011	247.8659	0.0159	0.0057	200.743	-0.0066	0.16	0.0099	
	ptc-01-21-AVG	247.8827	0.0327	0.0061	200.7515	0.0061	0.17	0.0127	

GMT

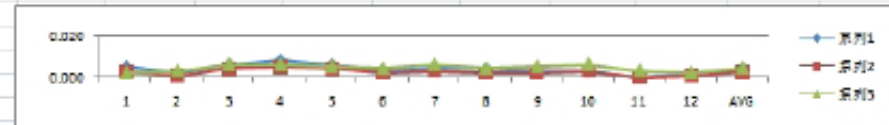
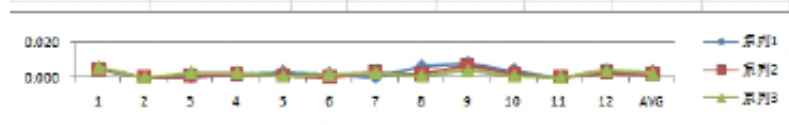
MIRRA RETAINER RING DATA

Retainer Ring 측정 결과 정리														
Type	Marking No	외경 / 직경도		내경 / 직경도		조도 (Ra) / (Rmax) (μm)								평탄도 (λ) (μm)
		φ 347.90 ± 0.1 mm	진편도 (C)	φ 301.06 ± 0.1 mm	진편도 (C)	1	2	3	4	5	6	AVG	σ	
MIRRA CMP 用 12 INCH	PTC-0901-0004	347.9099	0.008	301.0809	0.0028	0.25	0.21	0.28	0.22	0.25	0.20	0.25	0.021	0.029
						0.64	1.17	1.14	1.25	1.20	1.20	0.68	0.228	
	PTC-0901-0006	347.9186	0.001	301.044	0.0048	0.16	0.14	0.15	0.18	0.16	0.16	0.16	0.008	0.042
						1.20	0.55	0.55	1.07	1.14	1.07	1.05	0.120	
	PTC-0901-0008	347.9196	0.0052	301.054	0.0038	0.21	0.20	0.22	0.22	0.25	0.25	0.22	0.017	0.017
						1.25	1.42	1.55	1.25	1.59	1.29	1.52	0.074	
	PTC-0901-0009	347.901	0.0048	301.0568	0.0018	0.20	0.17	0.12	0.25	0.15	0.17	0.15	0.035	0.027
						1.14	1.20	0.89	6.61	1.55	1.26	2.07	2.228	
평균치		347.9117	0.0046	301.0544	0.0032	0.63	0.67	0.63	1.36	0.73	0.70	0.74	0.34	0.03

Mitutoyo 측정기 이용 평탄도 측정 Data

Type	Marking No	위치	평탄도 (λ)														AVG	σ	I AVG	I. σ
			1	2	3	4	5	6	T	8	9	10	11	12						
MIRRA CMP 用 12 INCH	PTC-0901-0004	OE	0.005	0.000	0.000	0.002	0.003	0.002	0.000	0.005	0.008	0.004	0.000	0.004	0.0028	0.0027	0.0025	0.0022		
		C	0.005	0.000	0.001	0.002	0.001	0.000	0.003	0.002	0.007	0.002	0.000	0.003	0.0022	0.0021				
		IE	0.006	0.000	0.003	0.003	0.001	0.002	0.003	0.001	0.004	0.001	0.000	0.004	0.0023	0.0018				
	PTC-0901-0006	OE	0.005	0.002	0.006	0.008	0.006	0.003	0.004	0.004	0.003	0.003	0.000	0.002	0.0038	0.0022	0.0035	0.0019		
		C	0.003	0.001	0.004	0.005	0.004	0.002	0.003	0.002	0.002	0.003	0.000	0.001	0.0025	0.0019				
		IE	0.002	0.003	0.006	0.005	0.005	0.004	0.006	0.004	0.005	0.006	0.003	0.002	0.0043	0.0016				
	PTC-0901-0008	OE	0.005	0.009	0.007	0.008	0.009	0.012	0.012	0.009	0.008	0.012	0.011	0.008	0.0090	0.0024	0.0094	0.0023		
		C	0.007	0.011	0.009	0.009	0.009	0.013	0.012	0.011	0.010	0.012	0.011	0.009	0.0103	0.0017				
		IE	0.007	0.010	0.008	0.007	0.007	0.013	0.013	0.010	0.009	0.012	0.009	0.006	0.0093	0.0024				
	PTC-0901-0009	OE	0.005	0.010	0.011	0.013	0.007	0.012	0.011	0.014	0.008	0.013	0.015	0.012	0.0109	0.0030	0.0118	0.0028		
		C	0.010	0.010	0.013	0.014	0.010	0.013	0.015	0.015	0.011	0.013	0.015	0.012	0.0126	0.0020				
		IE	0.010	0.009	0.013	0.014	0.009	0.013	0.015	0.015	0.010	0.015	0.018	0.011	0.0125	0.0028				

측정 부위 : Side Hole 위 EPS 면 (OE : 밖쪽에서 5 mm 안쪽 부분, C : Center, IE : 안쪽에서 5 mm 밖쪽 부분)



JIG

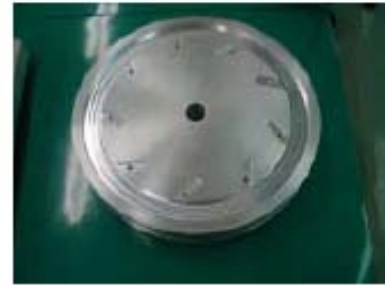
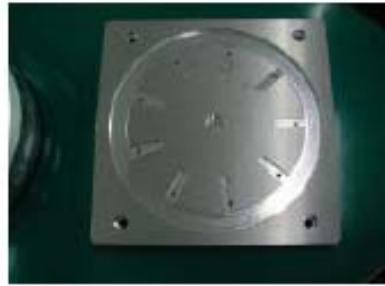
Tap Jig

Slot Jig

SUS & PPS 精密 Jig

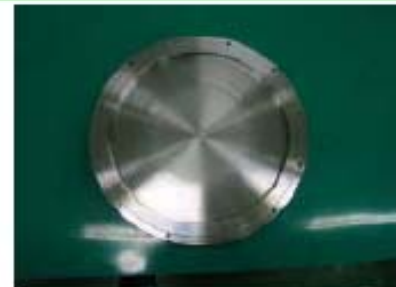
12

Inch

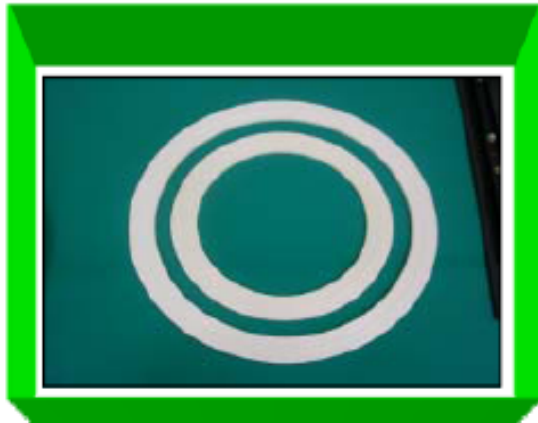
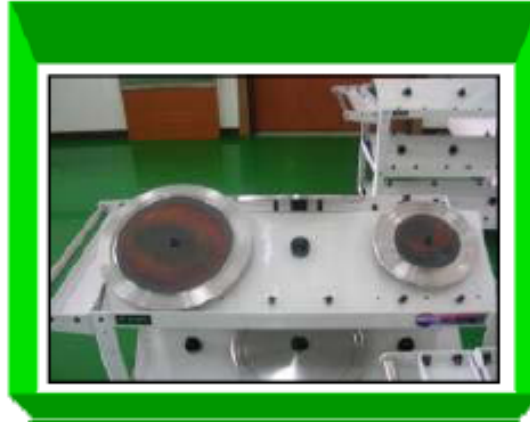


8

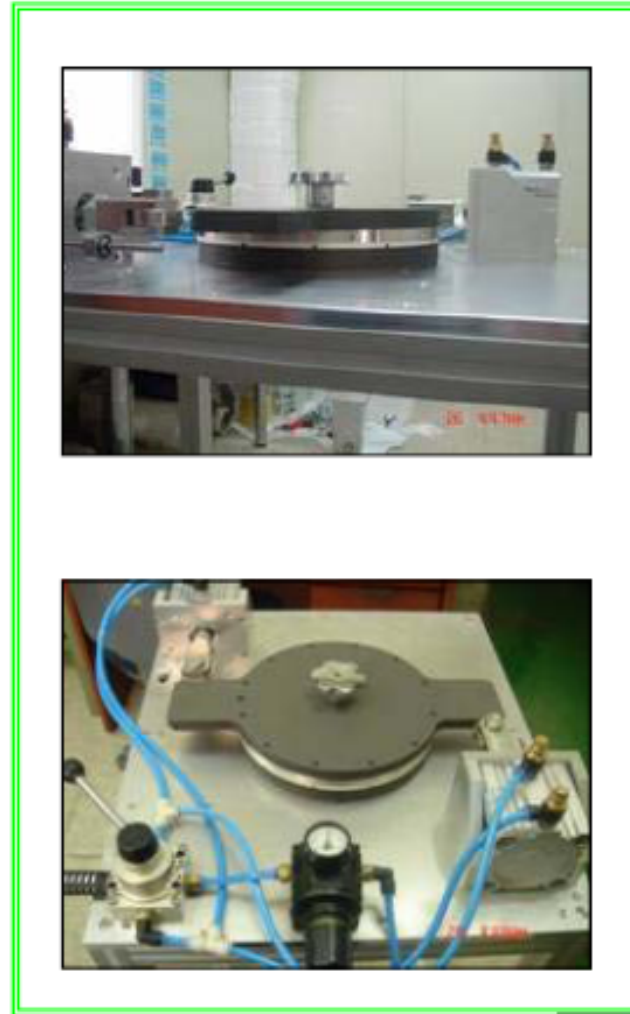
Inch



其他Jig及加工Parts



BONDING 步驟



THANKS
FOR YOUR ATTENTION!